

CELCAT® Timetabler 7.2

Live Release Notes

Table of Contents

1. Introduction	1
2. The Ribands.....	2
2.1. View Riband	2
2.2. Administrator Riband.....	2
2.3. Management Riband.....	2
2.4. Tools Riband.....	3
2.5. User Riband	3
2.6. Timetable Riband	3
3. Advisers.....	3
3.1 Time Adviser.....	4
3.2 Staff and Room Advisers	4
4. Usage Charts	5
5. Terminology	5
6. Environment.....	5
6.1 Sidebar	5
6.1 Navigation Panel	6
7. Record Editing	7
8. Drag & Drop	7
8.1 Event Editing	7
9. Timetable Rollover	8
10. Access Rights Markers.....	8
11. Clash Checking	8
11.1 Dynamic Clash Checking	8
11.2 Clash Checking Wizard	8
11.3 Logged Clashes.....	10
12. Options.....	10
13. Event Naming Support	10

1. Introduction

The purpose of this document is to outline the new features of CELCAT *Timetabler 7 Live*. This document is not a user guide; it is intended to describe the new or changed features.

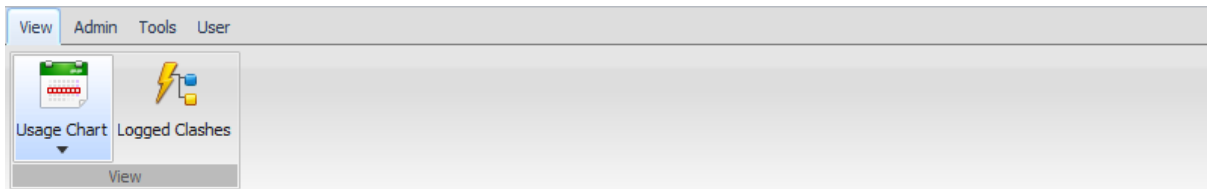
2. The Ribands

The Ribands (menus) in CELCAT *Timetabler* Live have been redeveloped to accommodate additional functionality. There are now five types of Riband:

- View Riband (**Modified**)
- Administrator Riband (**Modified**)
- Management Riband
- Tools Riband (**New**)
- User Riband (**New**)
- Timetable Riband (**New**)

2.1. View Riband

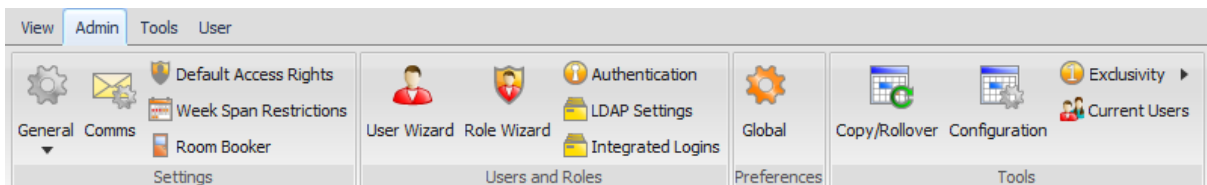
The View Riband includes Usage Charts and Logged Clashes.



View Riband

2.2. Administrator Riband

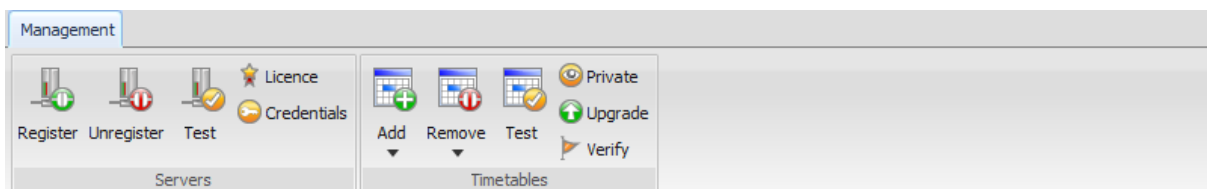
The Administrator Riband has been subject to minor changes, with some buttons repositioned.



Administrator Riband

2.3. Management Riband

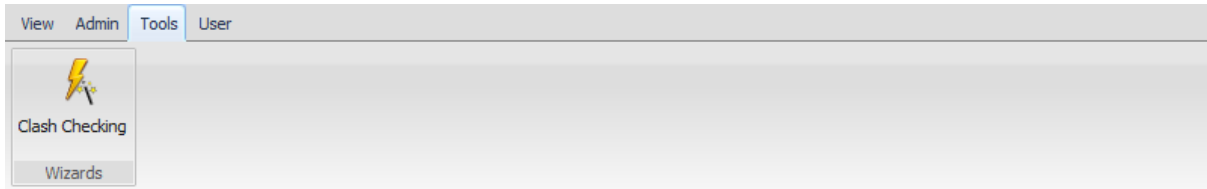
The Management Riband remains unchanged since CELCAT *Timetabler 7*.



Management Riband

2.4 Tools Riband

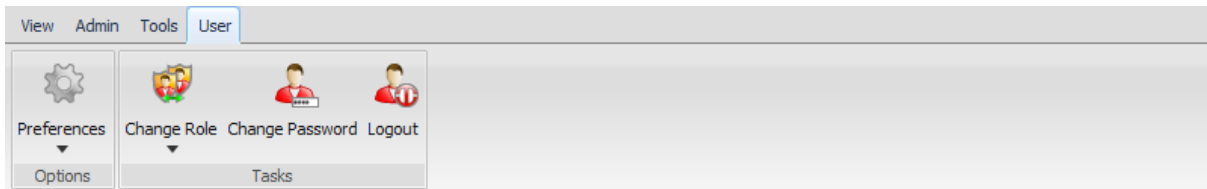
The Tools Riband is a new addition to the CELCAT *Timetabler* Live Ribands. In this release the Tools Riband provides the user with access to the Clash Checking Wizard. More Items will appear here in future releases.



Tools Riband

2.5 User Riband

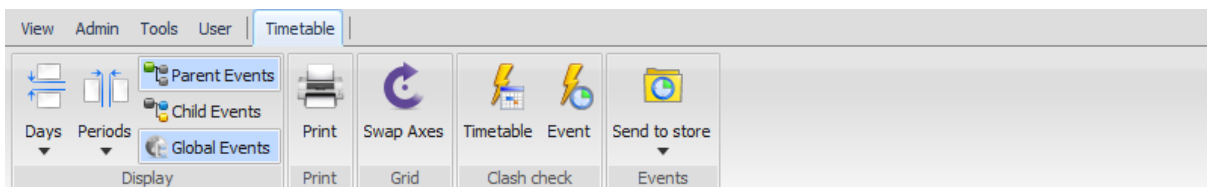
The User Riband is another new Riband, with options to change role, password, user preferences and an extra logout button for ease of use.



User Riband

2.6 Timetable Riband

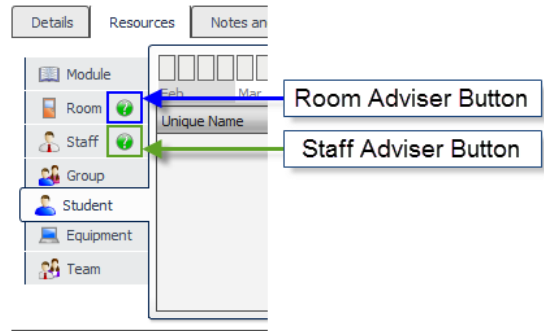
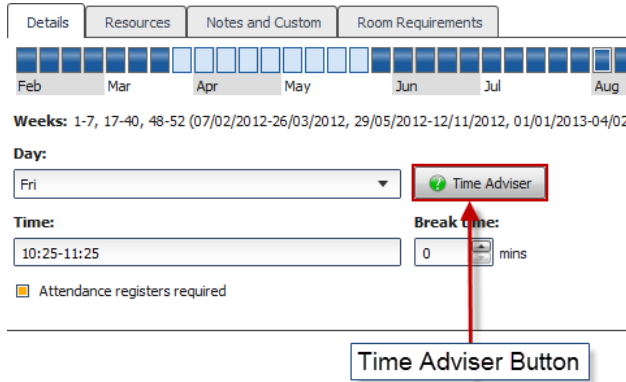
The Timetable Riband is the final new Riband implemented in this release which only appears when you are viewing a timetable grid. Commands include printing, switching the grid axis, showing global events, etc.



Timetable Riband

3. Advisers

CELCAT *Timetabler* Live is now armed with fully-functional Room, Staff and Time Advisers. These can be accessed via the event pane. Advisers are shown with a green question mark icon. Adviser options are configured via user or global preferences.



Adviser Buttons

3.1 Time Adviser

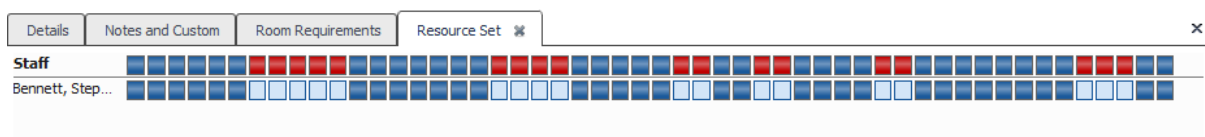
The Time Adviser has been dramatically improved to make its results clearer and more understandable. Rather than displaying results in a list, the Time Adviser now displays the results visually in the actual timetable grid, using a simple red or green system. Green indicates a suitable slot; red a slot which is not suitable.



Time Adviser

3.2 Staff and Room Advisers

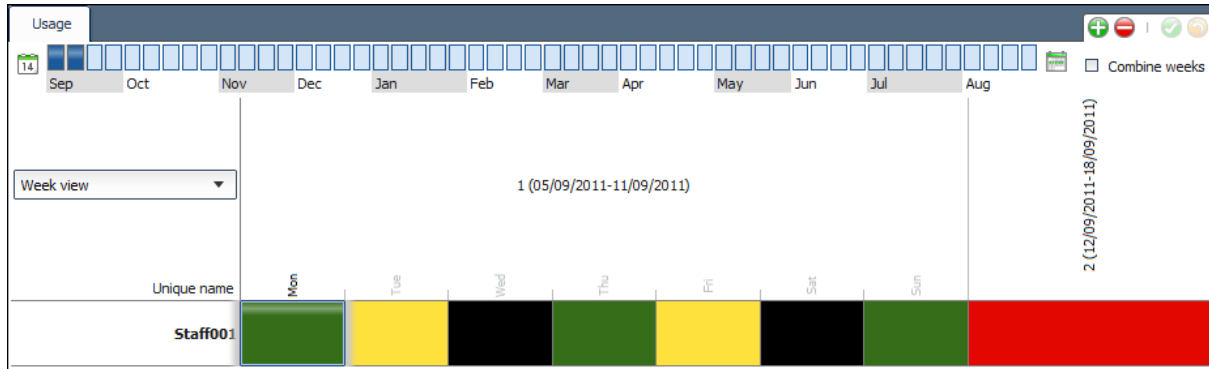
The Staff and Room Advisers are accessible via the event pane on the resources tab. After running the advisers, you can then select which of the suggested resources you want to assign to the event.



Resource Set Tab

4. Usage Charts

CELCAT *Timetabler* Live now includes enhanced usage charts, where it is possible to treat usage charts almost like a timetable grid e.g. you can create new events, delete events and view event details.



Usage Chart

5. Terminology

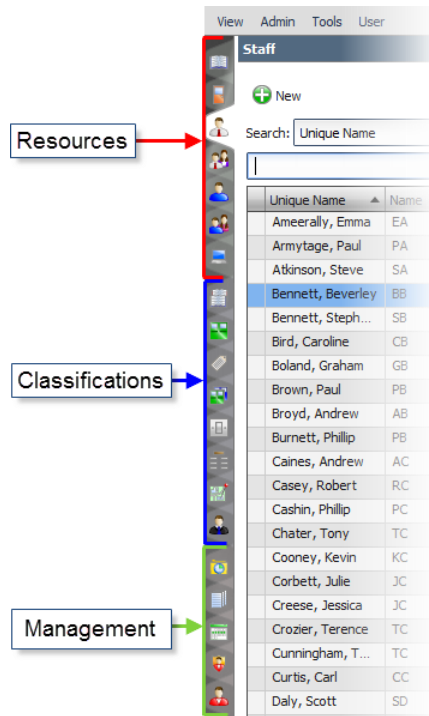
CELCAT *Timetabler* Live now fully supports user-defined terminology. Terminology can be defined globally or on a per user basis.

6. Environment

The CELCAT *Timetabler* Live environment has been improved to maximise the work space available to users.

6.1 Sidebar

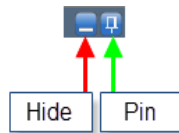
Quick access is now provided to resources, classifications and management utilities via the new Sidebar.



Sidebar Tabs

6.2 Navigation Panel

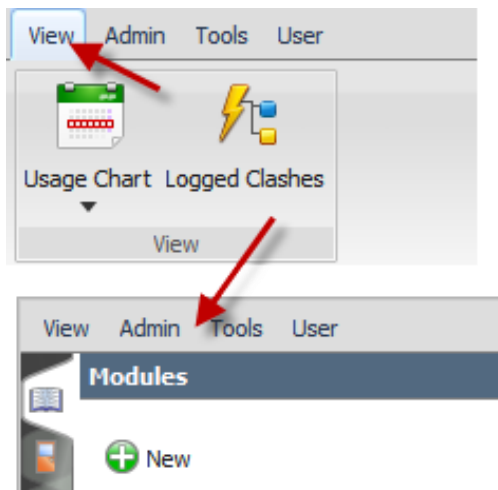
Also, to maximise available space, the Navigation Panel can now be open without impeding workspace due to the hide and pin options.



Hide and Pin Buttons – Navigation Panel

6.3 Riband Space Saving

The Riband menus can be minimised and maximised by double clicking on any of the Riband tabs.



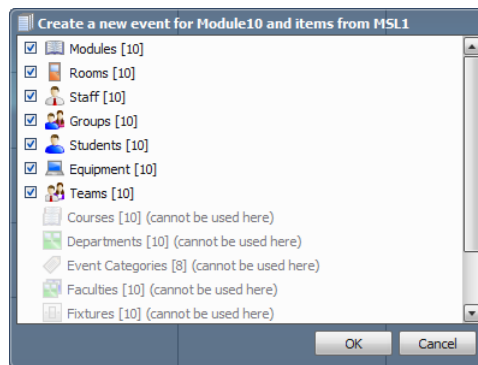
7. Record Editing

Record editing in CELCAT *Timetabler* Live is largely unchanged. However, users can now refresh records without having to close and re-open.



8. Drag & Drop

CELCAT *Timetabler* Live now uses an innovative drag and drop system that assists users with dragging multiple selection Lists.

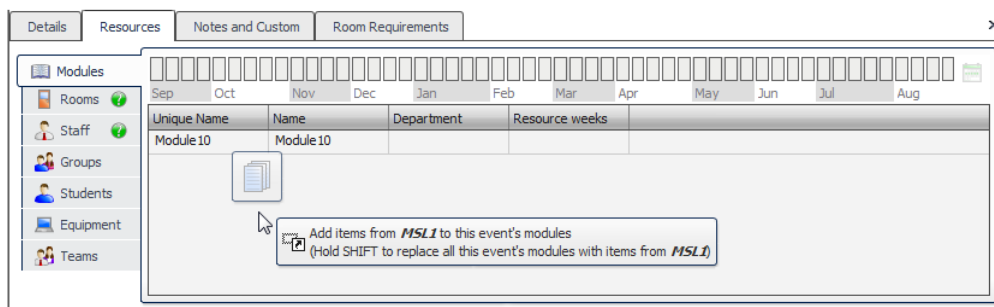


Dropping a Multiple Selection List on Timetable Grid

Dropping a multiple selection list onto the timetable grid results in a menu showing which items in the lists can be assigned to the new event that is to be created. It also gives you the option to deselect the items you don't want to assign. This functionality is available every time you drop a multiple selection list into a valid drop zone.

8.1 Event Editing

When dragging a resource into the event pane you now have the option to replace existing resources of the selected type or add the selected resource to the list.



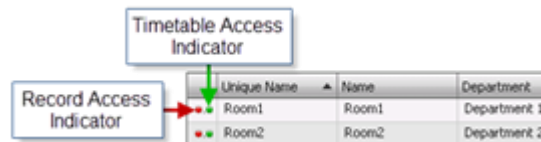
Drag options – Event Pane

9. Timetable Rollover

The CELCAT Rollover utility now includes two new options to rollover data generated via CELCAT Automation and Exam scheduler.

10. Access Rights Markers

For all non-admin users, a new feature has been added to the navigation panel, to enable users to discern quickly what they have access to via a 'traffic lights' system; red indicates *no access*, amber indicates *view access* and green indicates *full access*.



Access Rights Traffic Lights

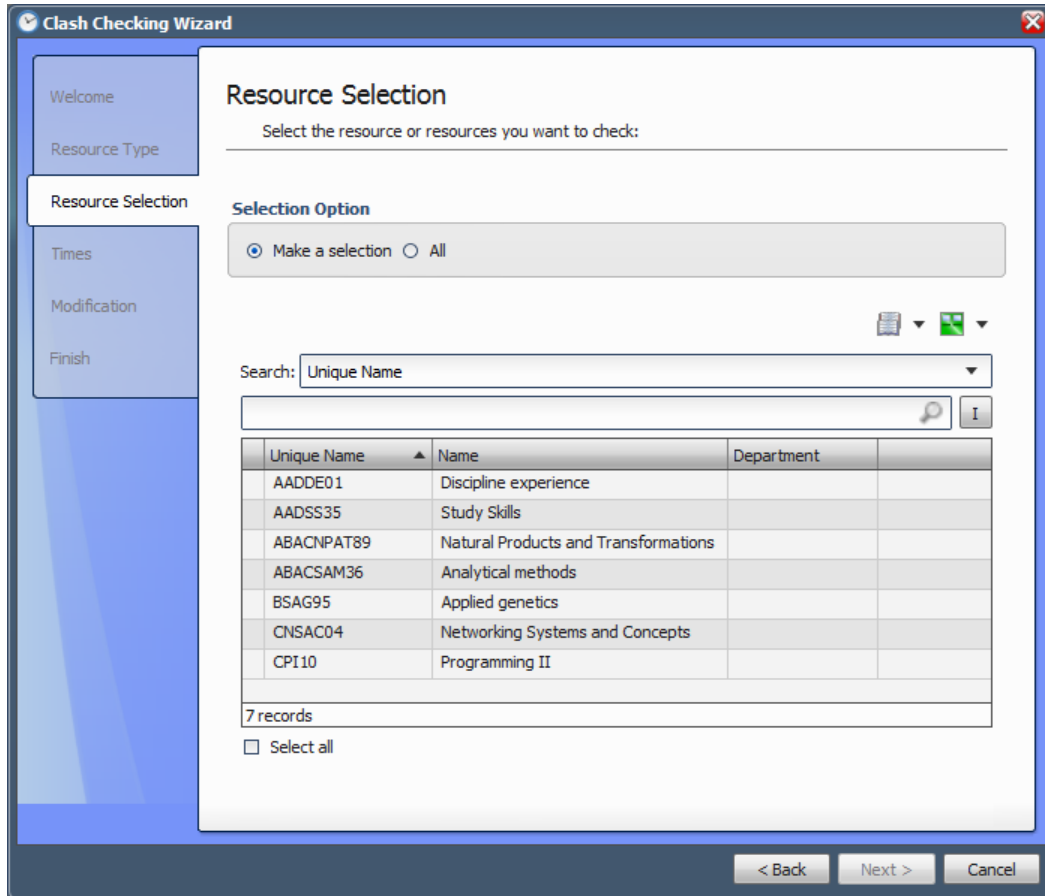
11. Clash Checking

11.1 Dynamic Clash Checking

In the initial release of CELCAT *Timetabler* Live clash checking was restricted to dynamic clash checks. In the current release these checks still exist, but have been complemented by the full suite of clash checks that are available in CELCAT *Timetabler* Client.

11.2 Clash Checking Wizard

CELCAT *Timetabler* Live has been extended to include the Clash Checking wizard. Using this wizard an end user can clash check an individual resource timetable or all resource timetables.



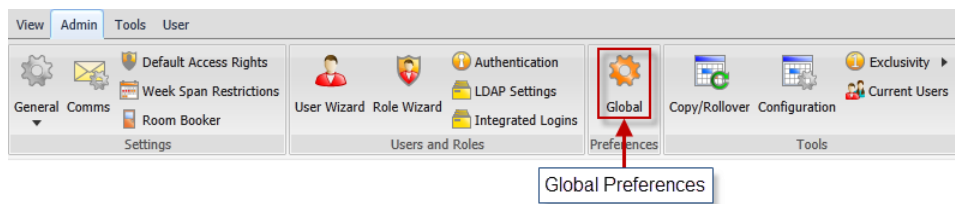
Resource Selection Window Clash Checking Wizard

11.3 Logged Clashes

CELCAT *Timetabler* Live now includes the ability to display a logged clash, and the user can also hide accepted clashes.

12. Options

CELCAT *Timetabler* Live now provide users with all the relevant options from CELCAT *Timetabler* Client and Administrator, as well as additional ones that are specific to CELCAT *Timetabler* Live *e.g. side bar buttons*. Also, not only can timetable administrators set globally enforced settings, each individual user can configure their own settings according to their own personal preferences (unless a particular setting has been globally enforced by the timetable administrator).



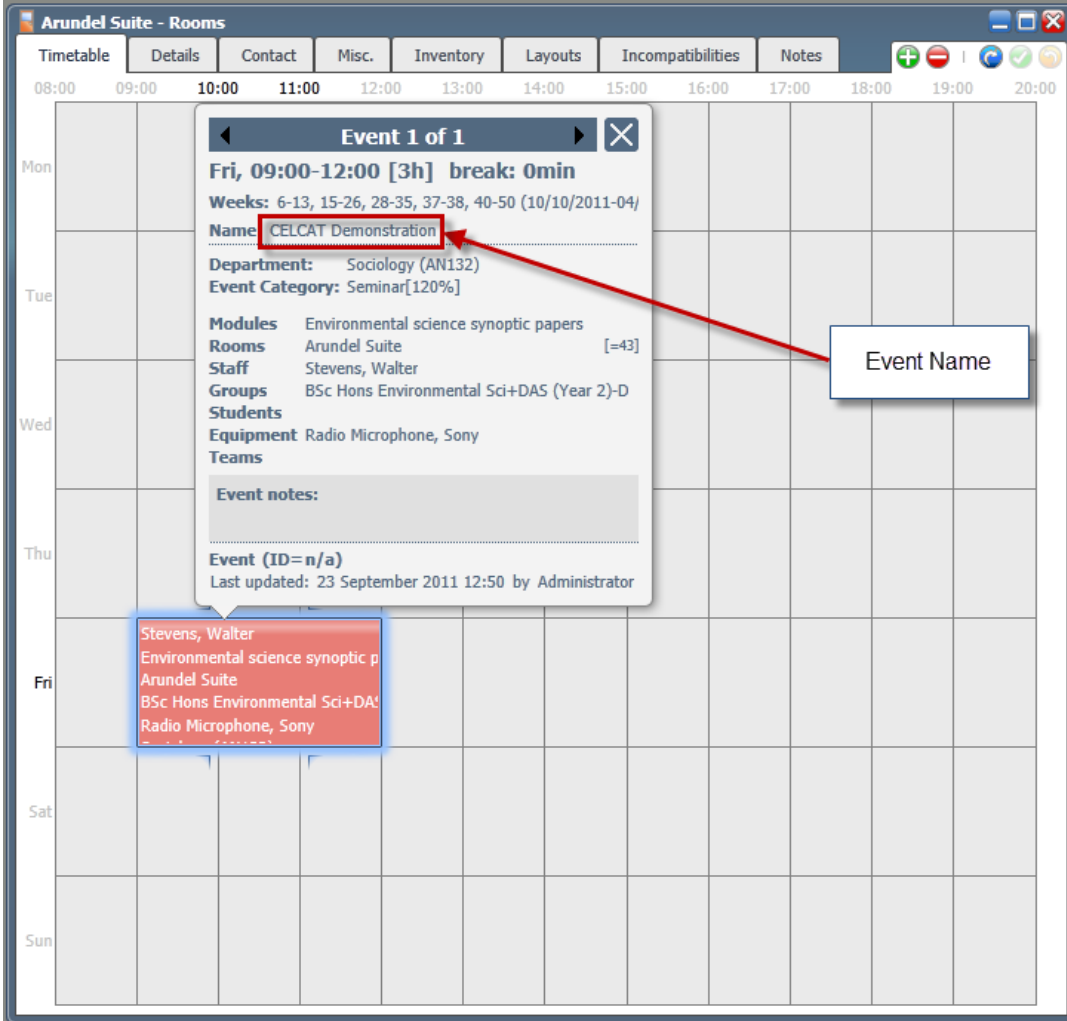
Global Preferences Button – Admin Riband



User Preferences Button – User Riband

13. Event Naming Support

CELCAT *Timetabler* Live now supports the ability to select names for an event. Currently the display value for an event name is read only.



Event Details Window with Event Name displayed