

# CELCAT® Timetabler 7.2

## Release Notes

---

## Table of Contents

1.	Introduction.....	1
2.	Exporting to CSV .....	2
3.	Emailing an Event .....	2
4.	Auto Calendar Location Support .....	2
5.	QLS Plugin Changes .....	3
6.	COM Library.....	3
7.	Multiple Email Address Support.....	3
8.	Hidden Accepted Clashes Enhancement.....	4
9.	Access Rights .....	4
10.	Managed Sub Group Policy .....	4
11.	Room Booker .....	5
12.	Offline Attendance .....	6
12.1	Offline Attendance Viewer .....	6
12.2	Promag Manager .....	7
13.	Rollover Utility.....	7
14.	Event Name Support .....	8
15.	Fixes.....	9

## 1. Introduction

The purpose of this document is to outline the new features of CELCAT *Timetabler* 7.2. This document is not a user guide; it is intended to describe the new or changed features.

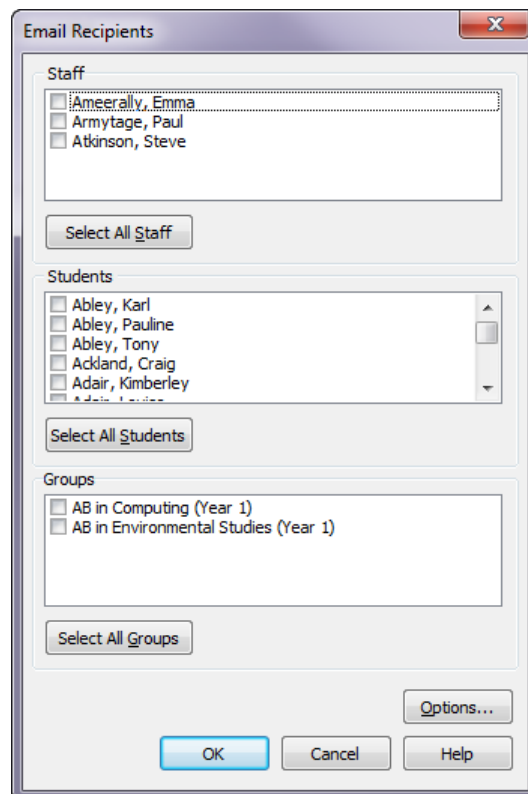


## 2. Exporting to CSV

When exporting events stores to a CSV file in previous releases of CELCAT *Timetabler* all events in a timetable were also exported. With the release of CELCAT *Timetabler* 7.2 this behaviour has been changed to ensure that only events that form part of the event store to be exported are included in output file.

## 3. Emailing an Event

In previous releases of CELCAT *Timetabler* an event could be emailed to staff and students. This has been extended to include the groups (providing the group has an email address).

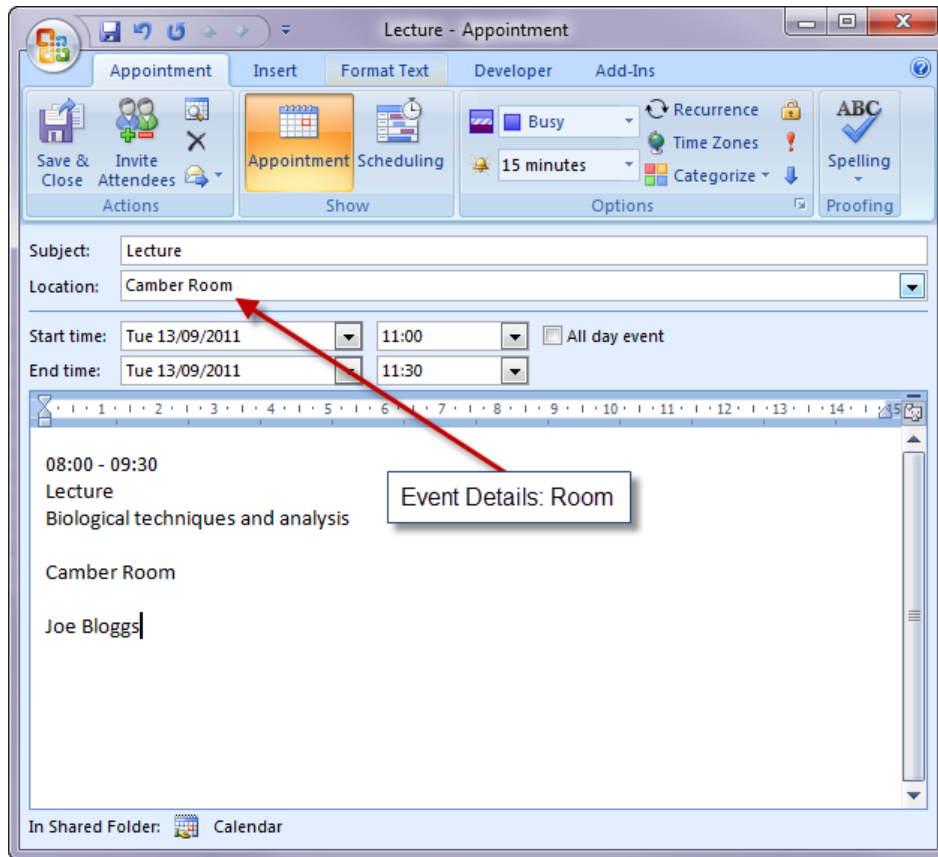


*Email Event Recipients*

The Email Recipients page is populated with the names of the Staff Members, Students and Groups assigned to the event that have an email address.

## 4. Auto Calendar Location Support

The CELCAT *Timetabler* Auto Calendar application has been extended to make use of the location field within Outlook Calendar Appointments. When an appointment is created the room(s) assigned to the event are placed in this field.



*Microsoft Outlook Calendar Appointment*

## 5. QLS Plugin Changes

In CELCAT *Timetabler 6.4*, the value length of string fields was limited to 64 characters. In CELCAT *Timetabler 7*, this limit was increased for most fields to a maximum of 128 characters. The field lengths within Distinction QLS Import plugin have now been increased to accommodate these changes.

## 6. COM Library

The COM Library application has been extended to support the Supervisor classification. Provision for Custom fields (Formerly Tags) has also been included. Additional methods have been added to the Attendance Marking Object.

## 7. Multiple Email Address Support

In previous releases of CELCAT *Timetabler*, when an application was required to send an email it would only be able to send to one email address. With this release the email functionality has been changed so that if a recipient's email address actually holds *multiple* addresses then each address is sent an email.

For example, suppose you use the Mailing Wizard to send email to member of staff 'Joe Bloggs', and in his record window we have the email address: J.Bloggs@example.com;Joe.Bloggs@example.co.uk

(it's not uncommon for users to specify a work *and* home email in the same field), the Mailing Wizard now sends email to both addresses.

## 8. Hidden Accepted Clashes Enhancement

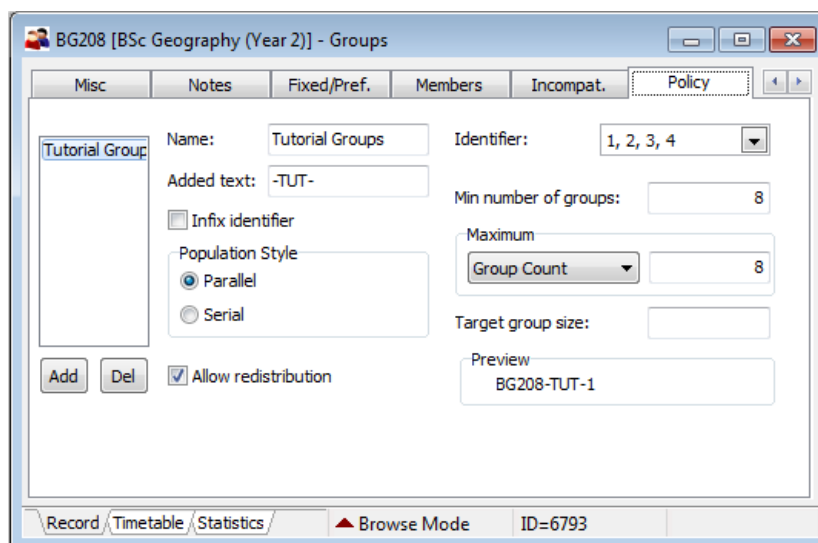
In previous releases of CELCAT *Timetabler* a logged clash could be hidden while the results were being viewed, however these clashes would be displayed once a clash check was performed. With the current release this behaviour has been changed so that a hidden accepted clash will not be shown until it is reopened.

## 9. Access Rights

Access rights for CELCAT *Timetabler* have now been extended to include CELCAT *Timetabler* Automation.

## 10. Managed Sub Group Policy

The Group record window includes a new Tab that helps to automatically manage the splitting of a group into subgroups during Automation processing.



The screenshot shows a software window titled "BG208 [BSc Geography (Year 2)] - Groups" with a "Policy" tab selected. The window contains several input fields and controls for configuring a group's policy. The "Name" field is set to "Tutorial Groups" and the "Identifier" is "1, 2, 3, 4". The "Added text" field contains "-TUT-". The "Min number of groups" is set to 8, and the "Maximum Group Count" is also set to 8. The "Population Style" is set to "Parallel" (indicated by a selected radio button). There is an unchecked checkbox for "Infix identifier" and a checked checkbox for "Allow redistribution". A "Preview" field shows "BG208-TUT-1". At the bottom of the window, there are tabs for "Record", "Timetable", and "Statistics", and a status bar showing "Browse Mode" and "ID=6793".

*Group Record Window Policy Settings*

In Automation, subgroups are automatically generated and populated with students, based on the rules specified on this page. Once created, these subgroups can then be used in timetables in the usual manner. They are automatically populated with students when students are attached to the parent group, based on the rules specified by the population style and size limitations (minimum number of groups, maximum group size, target group size).

## 11. Room Booker

CELCAT *Timetabler* Room Booker now includes a number of popular customer requests. There are new functions to enforce Room Booker options and apply requester email policies within the CELCAT *Timetabler* Administrator, either timetable wide or by individual roles.

RB Requester Policy RB Defaults

Defaults apply to the current role. Unless enforced, they may be overridden as bookings are made.

Max. days ahead:	<input type="text"/>	<input type="checkbox"/> Use timetable default	<input type="checkbox"/> Enforce
Max. duration:	<input type="text"/>	<input type="checkbox"/> Use timetable default	<input type="checkbox"/> Enforce
Confirm booking changes:	<input checked="" type="radio"/> Always <input type="radio"/> Never	<input type="checkbox"/> Use timetable default	<input type="checkbox"/> Enforce
Categorise by site:	<input type="radio"/> Always <input checked="" type="radio"/> Never	<input type="checkbox"/> Use timetable default	<input type="checkbox"/> Enforce
Categorise by department:	<input type="radio"/> Always <input checked="" type="radio"/> Never	<input type="checkbox"/> Use timetable default	<input type="checkbox"/> Enforce
Include non-schedulable rooms:	<input type="radio"/> Always <input checked="" type="radio"/> Never	<input type="checkbox"/> Use timetable default	<input type="checkbox"/> Enforce
Near-miss capacity percentage:	<input type="text" value="78"/> %	<input type="checkbox"/> Use timetable default	<input type="checkbox"/> Enforce
Near-miss layout capacity:	<input checked="" type="radio"/> Def. layout <input type="radio"/> Any layout	<input type="checkbox"/> Use timetable default	<input type="checkbox"/> Enforce
Add staff/student to event:	<input type="radio"/> Always <input checked="" type="radio"/> Never	<input type="checkbox"/> Use timetable default	<input type="checkbox"/> Enforce
Default event department:	<input type="text" value="Science"/> ...	<input checked="" type="checkbox"/> Use timetable default	<input type="checkbox"/> Enforce
Default event category:	<input type="text" value="Practical"/> ...	<input checked="" type="checkbox"/> Use timetable default	<input type="checkbox"/> Enforce

*Timetable wide and By Role Room Booker enforceable Room Booker options*

RB Requester Policy RB Defaults

The policy applies to the current role.

Default requester policy

No default values  
(useful when requests are made on behalf of others)  Use timetable default

Take default values from CELCAT user settings

Allow CELCAT user settings to be overridden per-machine  
(useful for roles using a shared login such as 'Guest')

*Timetable wide and by role requester policy Room Booker options*

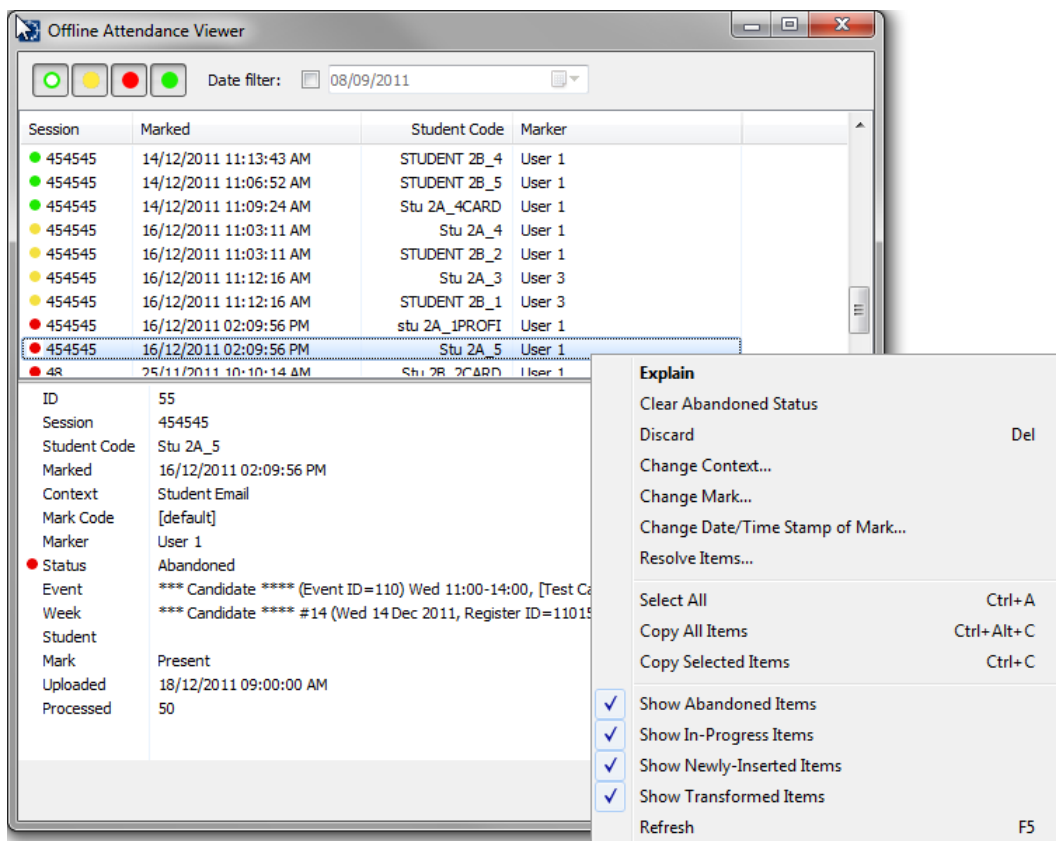
## 12. Offline Attendance

CELCAT *Timetabler* Offline Attendance (OLA) was introduced in CELCAT *Timetabler 7* and has been updated for this release to include two new supporting tools:

- Offline Attendance Viewer
- Promag Manager

### 12.1 Offline Attendance Viewer

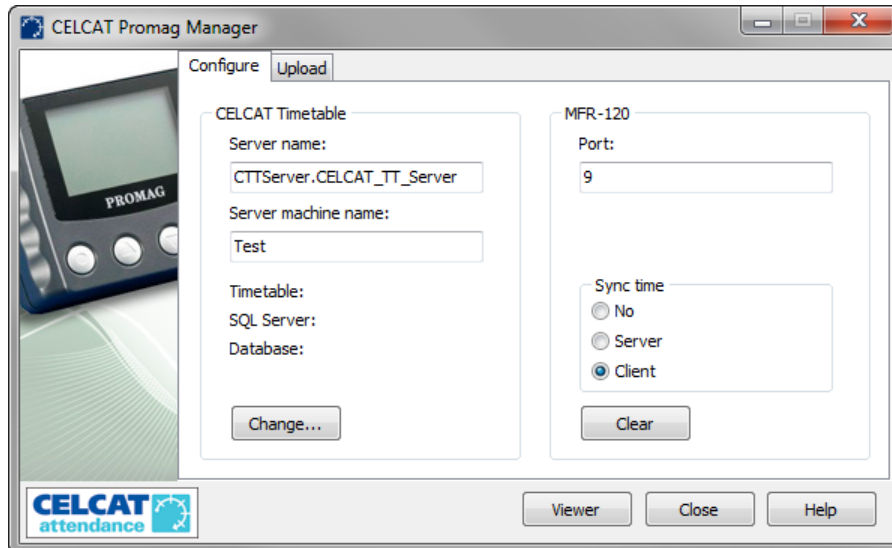
CELCAT *Timetabler* Offline Attendance Viewer is a new tool that provides an interface to manipulate and revive entries in the OLA staging table. This avoids having to manually examine the database to review and resolve anomalies.



*Offline Attendance Viewer with editing options*

## 12.2 Promag Manager

CELCAT *Timetabler* Promag Manager works identically to CELCAT *Timetabler* Opticon Manager but allows a new data collector to be used with the Offline marking system; the **Promag MFR-120**. The **Promag MFR-120** data collector works with Mifare cards, which means the offline marking system now supports both Mifare cards and barcodes.



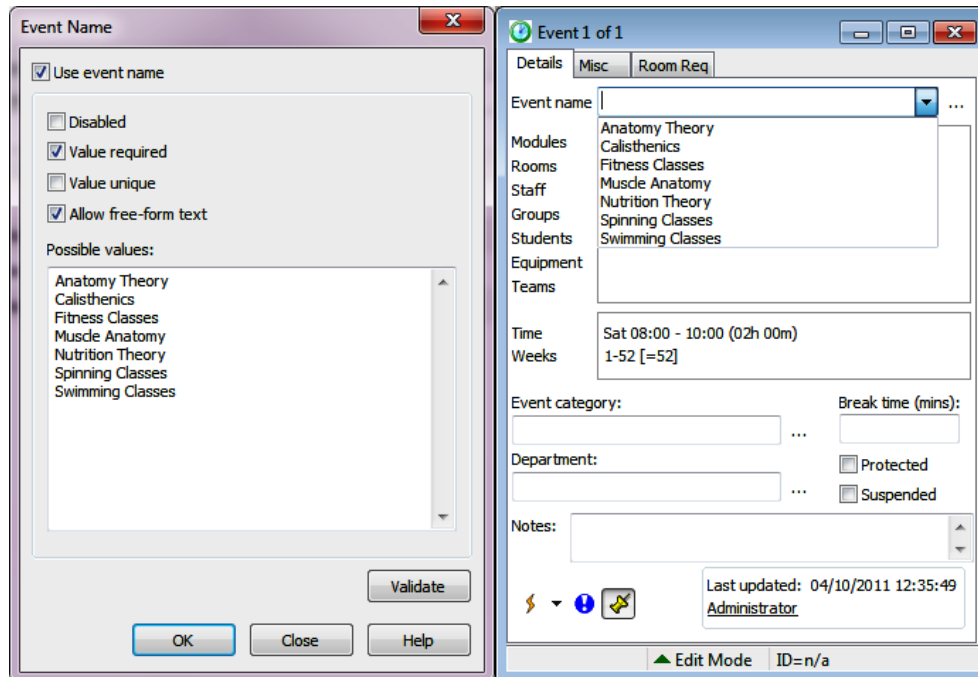
*Promag Upload Manager*

## 13. Rollover Utility

The CELCAT rollover utility now includes two new options to rollover data generated via CELCAT Automation and Exam scheduler and a new feature to automatically obtain the current event week map simplifies the mapping of event weeks.

## 14. Event Name Support

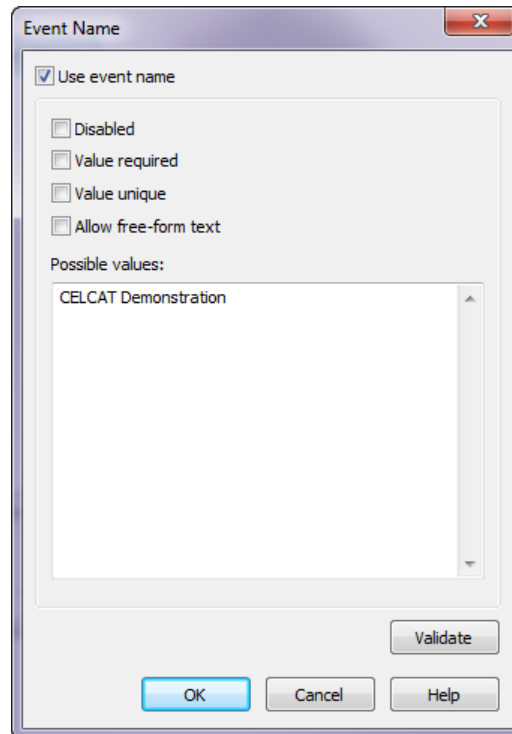
Event Naming provides the ability to assign a custom name to a timetabled event. Event names may be entered as free text or administrators may constrain naming conventions to a predefined dictionary. Event names can be included on the published timetable with additional font adjustments for improved readability.



*Event Details Window with Event Name displayed*

Event name has the following configurable options:

- Disabled
- Value Required
- Value Unique
- Allow free-form text
- Possible Values



*Event Name Configuration Window*

If this option is enabled then this field can also be used to search for events within the 'Go to Event' function.

## 15. Fixes

Since the release of CELCAT *Timetabler 7.1*, there have been a number of bug fixes that have been issued in maintenance releases. These are also included in the CELCAT *Timetabler 7.2* release. These bug fixes are listed below:

- Change in the caption of the 'Run Automation' item in the Tools menu. Fix for Automation problem whereby if two templates could clash with each other (e.g. the module can only run on Mondays, and cannot be double-booked) then an assertion failure occurs when verifying the results coming back from the engine. Fix for Automation bug whereby clashes between modules are not taken into account in either the engine or the evaluator.
- Templatised Events (of unusual times) failed to be scheduled in Automation when there is no time flexibility allowed in the templatisation process. COMLib modification - "tags" now replaced by "custom" fields + updated COMLib help file accordingly.
- Event Time Preference Constraints now default to the start of the first period rather than 1:00pm. Fixed erroneous truncation of large grid timetable printouts.
- In notification service, a badly formed email address no longer stops the service. Also, in some circumstances the notification of event change was not sent (when look ahead weeks is small and event weeks large). Modified Verify and rollover routines to better accommodate automation tables. Fixed a problem when upgrading databases with large CT\_LOG tables.
- Modified CSV export so that when event store only is selected, it only exports events that are related to the event stores and not the whole CT\_EVENT table.

- Fixed a bug in the Rollover function that deletes all single week events regardless of the setting in the Wizard.  
Fixed bug that gave an error in Rollover function due to an "unknown CT\_EVAL\_RUN table"
- Fixed memory leak in XML Server
- Removed deprecation warning from Web Server client

Copyright © CELCAT, 2011  
All Rights Reserved