

CELCAT® Timetabler Live Configuration Guide for Windows Server 2008

Contents

Introduction.....	1
System prerequisites.....	1
Creating a user account.....	1
Installing IIS	1
Adding the web server role	1
Configuring CELCAT Live	3
Adding ISAPI.....	3
Creating the Application Pool.....	5
Creating the Application.....	5
Configuring ISAPI Permissions	6
Technical Support & Installation Services.....	7

Introduction

This guide describes the recommended way to install and configure CELCAT *Timetabler* Live in Microsoft IIS. It assumes a basic knowledge of the Microsoft *Windows*® operating system and an understanding of how the software will be used in your workplace. Please contact us at the address given at the end of this guide if you require our assistance during installation or if you would like us to commission the software for you.

The most up-to-date copy of this guide is on the CELCAT web site (check the release number at the end of this document):

<http://www.celcat.com/forms/CT7LiveInstallationGuide2008.pdf>

System prerequisites

As well as meeting the minimum hardware/software requirements for running the CELCAT *Timetabler* software you should also have IIS with ISAPI extension support installed before installing CELCAT *Timetabler* Live. Please follow the appropriate sections of this guide to install IIS.

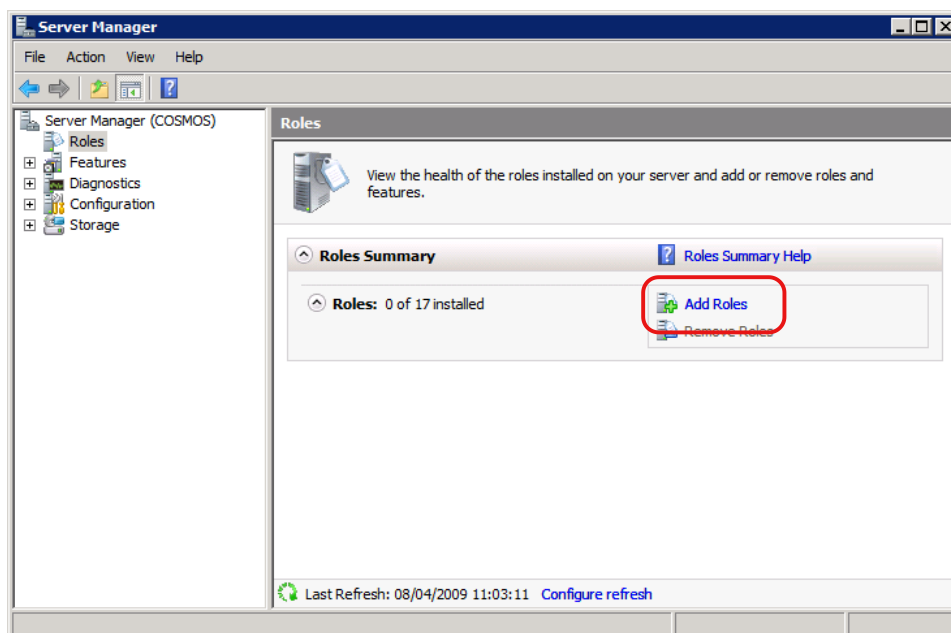
Creating a user account

Running CELCAT *Timetabler* Live will require a domain account with local administrative rights and access to CELCAT *Timetabler* Server via DCOM. It is recommended that you use the same user account as that created during the installation of CELCAT *Timetabler* Server.

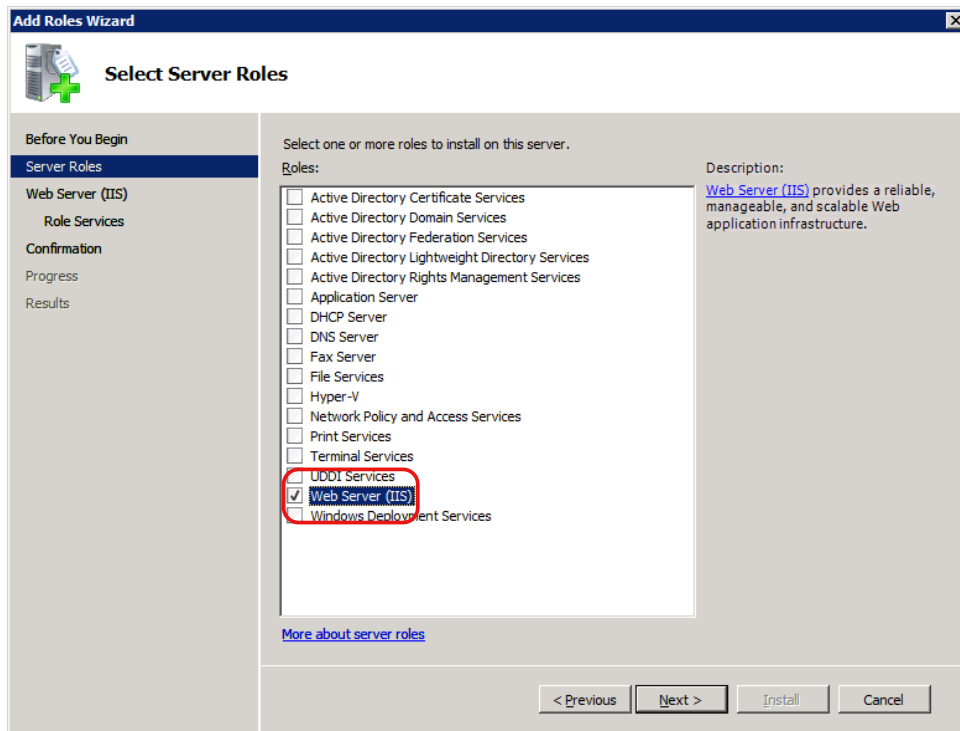
Installing IIS

Adding the web server role

Open the **Server Manager** from **Administrative Tools**. Select **Roles** on the left and then click **Add Roles** as shown below:

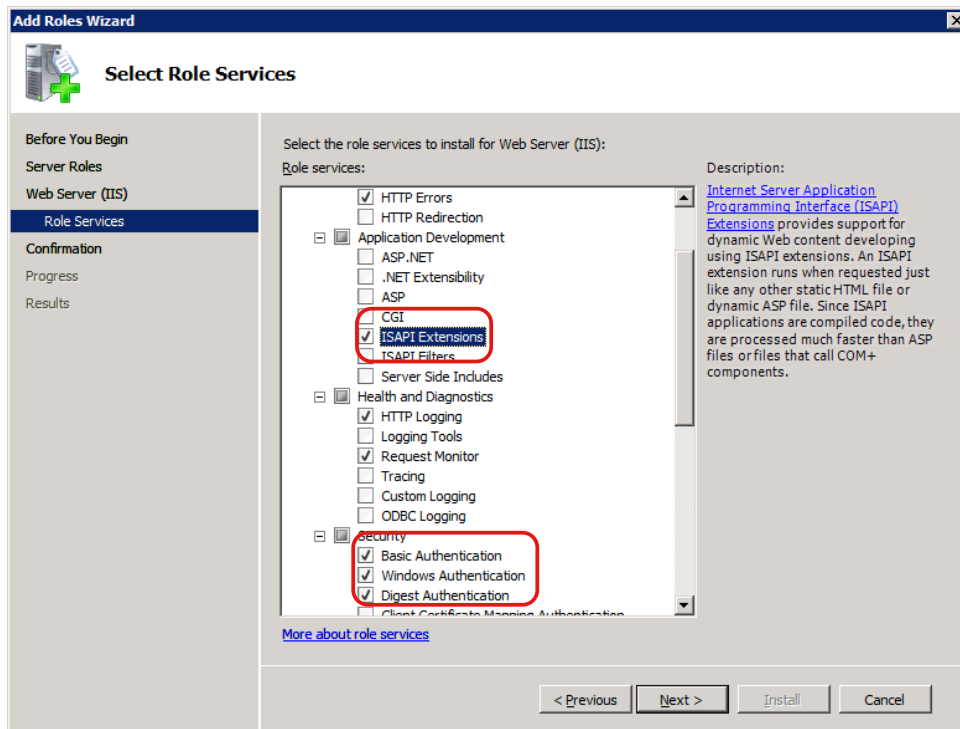


When asked what roles you want to install, make sure Web Server (IIS) is selected as shown below:



Click **Next** until you reach the **Select Role Services** page.

Opt to install the **ISAPI Extensions** as shown below. If you want to support NTLM logins, where users can be authenticated via their Windows accounts, also select **Basic Authentication**, **Windows Authentication** and **Digest Authentication**.



Also ensure that all options are selected under IIS 6 Management Compatibility

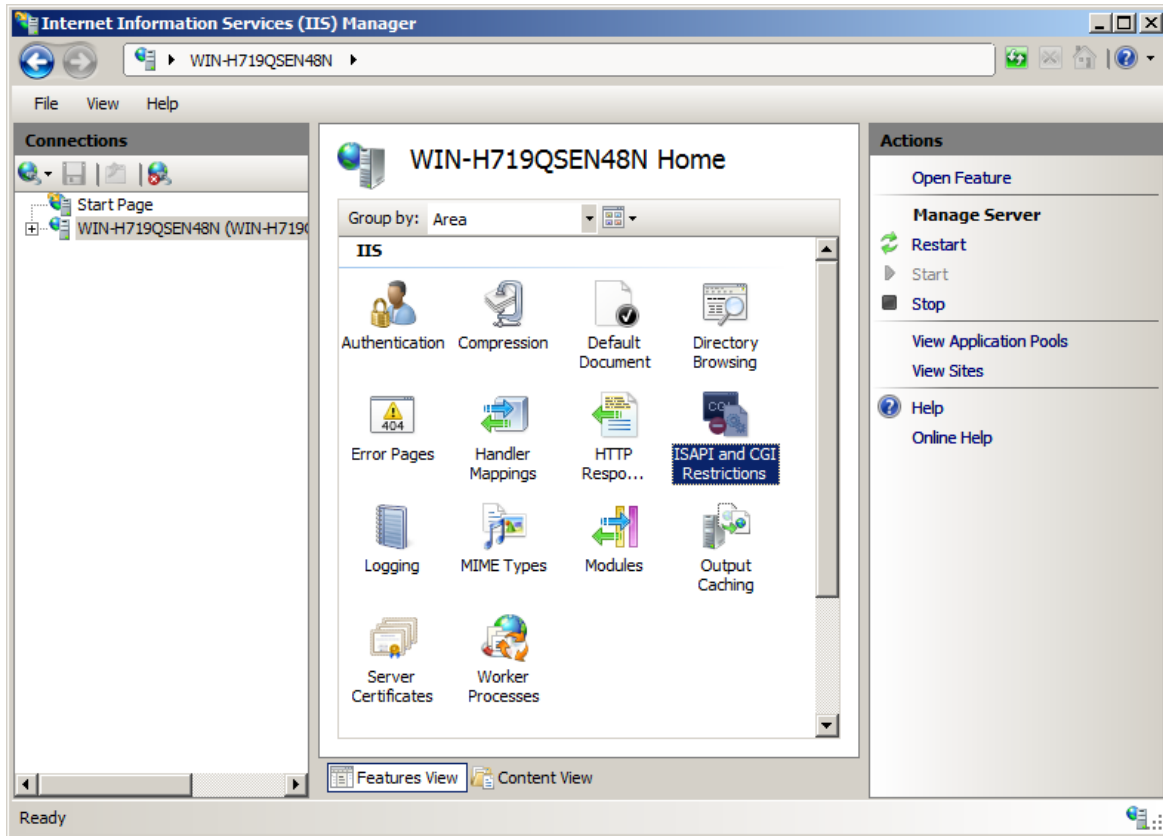
Finish the wizard and proceed to the *Configuring CELCAT Live* section.

Configuring CELCAT Live

CELCAT *Timetabler* Live should be installed at this point.

Adding ISAPI

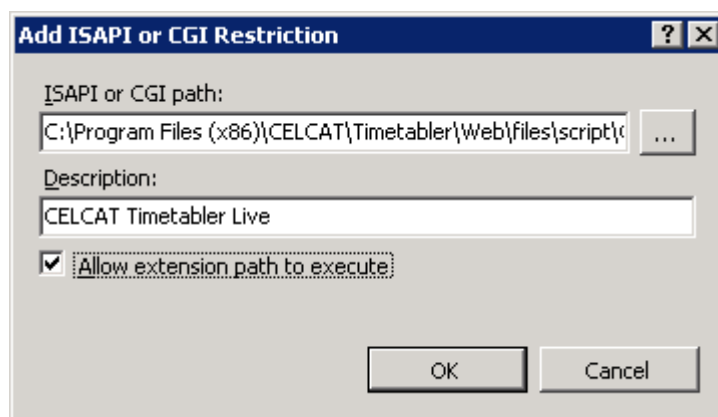
Open IIS from **Administrative Tools**, select your machine and double click **ISAPI and CGI Restrictions** (see below).



From the **Actions** tab on the right hand side click **Add...** and then add the path to CTWebService.dll. For default installations this will be:

C:\Program Files\CELCAT\Timetabler\Web\files\script\ (32bit OS)
 C:\Program Files(x86)\CELCAT\Timetabler\Web\files\script\ (64bit OS)

Give the extension a description, tick **Allow extension path to execute** (as shown below) and click **OK**.

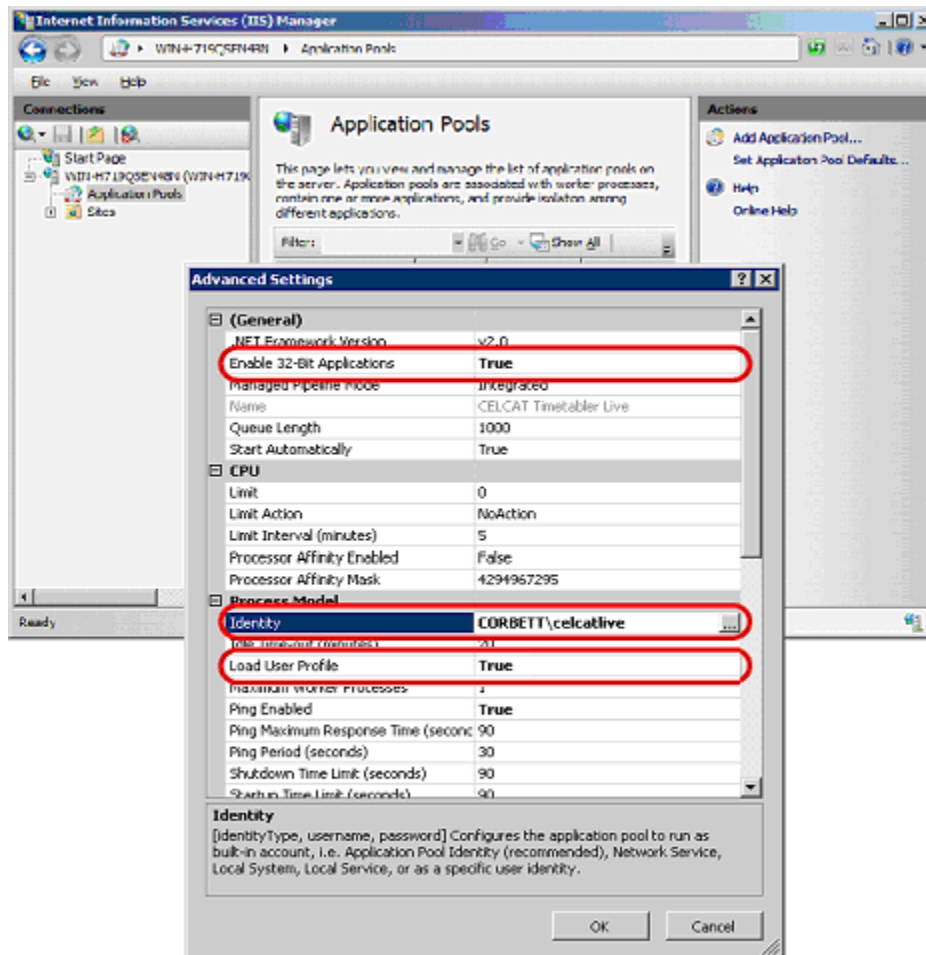


If you are going to use silent logins via NTLM, you will need to repeat the above steps for ntlm.dll

Creating the Application Pool

Click on **Application Pools** and add a new application pool. Give it a descriptive name like “CELCAT Timetabler Live”.

Select the newly created application pool and go to **Advanced Settings**. Change the identity of the application pool to use the account created for CELCAT *Timetabler* Server.

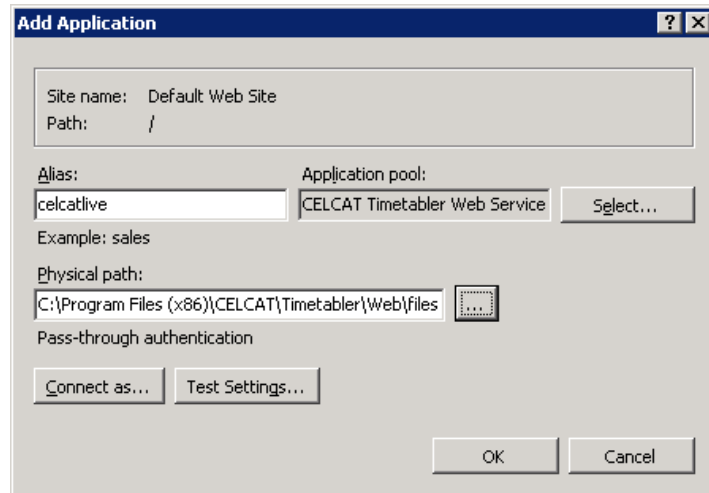


Creating the Application

Locate your default web site, right click and select **Add Application**. Give the new application an alias (for example ‘*celcatlive*’), select your CELCAT application pool and set the physical path to the *files* directory in Live

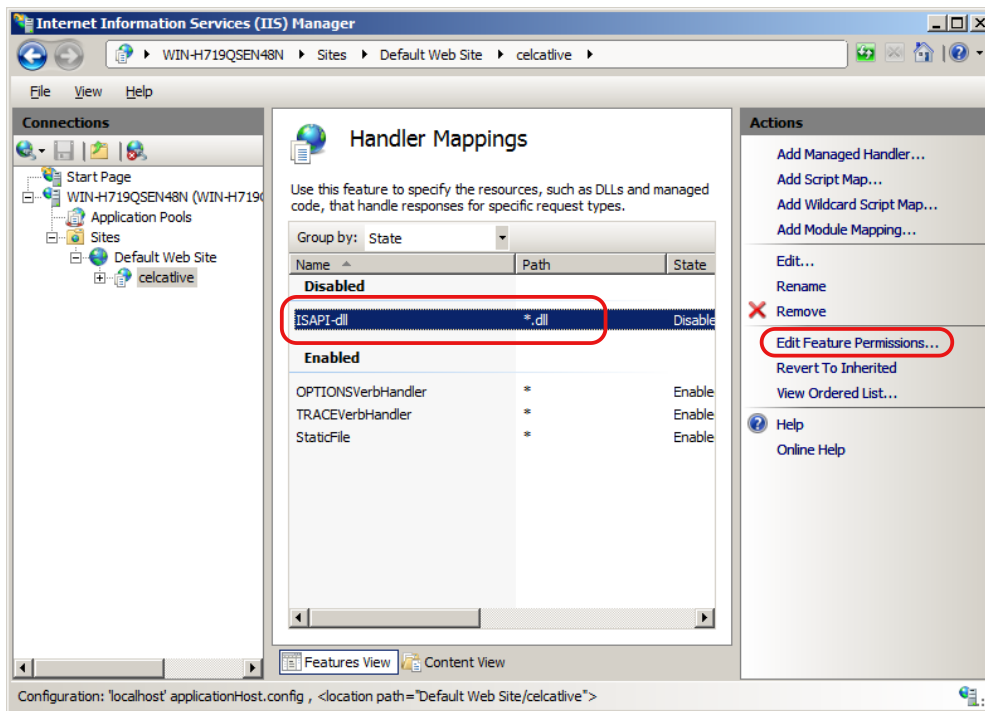
C:\Program Files\CELCAT\Timetabler\Web\files\ (32bit OS)

C:\Program Files(x86)\CELCAT\Timetabler\Web\files\ (64bit OS)

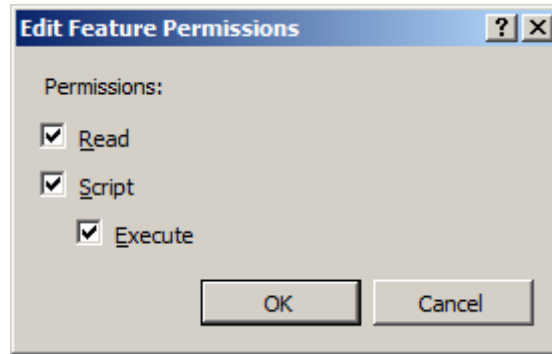


Configuring ISAPI Permissions

With the newly created application selected, double-click **Handler Mappings**. With the ISAPI-dll selected click **Edit Feature Permissions** as shown below:



Ensure the **Execute** option is checked (as shown below) and close all windows.



Your CELCAT Live web server is now configured.

Technical Support & Installation Services

We are here to help! If you need any assistance during the installation of the *Timetabler* software, or would like us to commission the software for you, please call us on 024 7646 3489 between 9am and 5pm Monday to Friday. Alternatively, email our technical support team at tech@celcat.com

Document Release 0.9
Copyright © 2011, CELCAT

All Rights Reserved

Trademarks:

"CELCAT" is a registered trademark of Corbett Engineering Ltd. "Microsoft" and "Windows" are either registered trademarks or trademarks of Microsoft Corporation in the United States and/or other countries.