

CELCAT Timetabler 7 Release Notes

Table of Contents

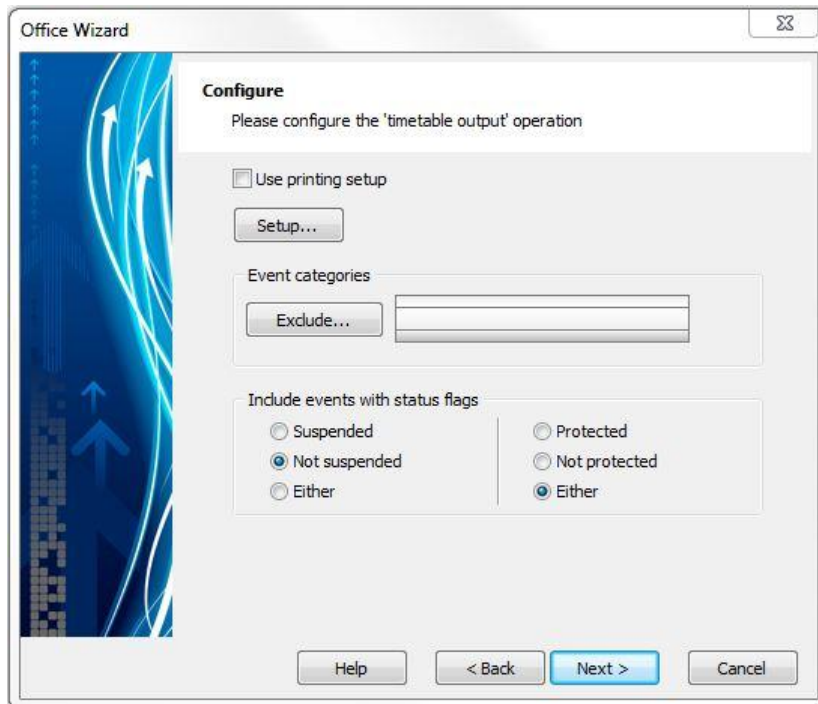
1. Introduction	1
2. Printing.....	1
3. Log Viewer.....	2
3.1 Natural Language	2
3.2 Improved Filtering.....	2
4. Custom Fields (formerly Tags)	3
5. Offline Attendance.....	4
6. SQL Unavailability & Timeout Protection	4
7. SMS Support Goes Modular.....	5
8. Notification Service.....	6
8.1 Additional Poor Attendance Recipient Types	6
8.2 Poor Attendance Trigger Modes.....	6
8.3 Notification via a Third Party Application	7
9. CELCAT Barcodes in Register Print.....	7
9.1 Barcode Requirements	8
9.2 Sample Barcode Register Print.....	9
10. Web Proxy Support	10
11. Group Email.....	10
12. Help Files.....	11
13. Student Attendance Tracking changes its Name	11
14. Changes to EMA Interface	12
15. Field lengths Increased	12

1. Introduction

The purpose of this document is to outline the new features of CELCAT *Timetabler* 7. This document is not a user guide; it is intended to describe the new or changed features. See also CELCAT *Timetabler* Live release notes and CELCAT *Timetabler* Automation release notes.

2. Printing

Some optimisation has been made in order to improve performance when printing from CELCAT *Timetabler* 7. In addition to this the office wizard now has the option to use the printing setting.

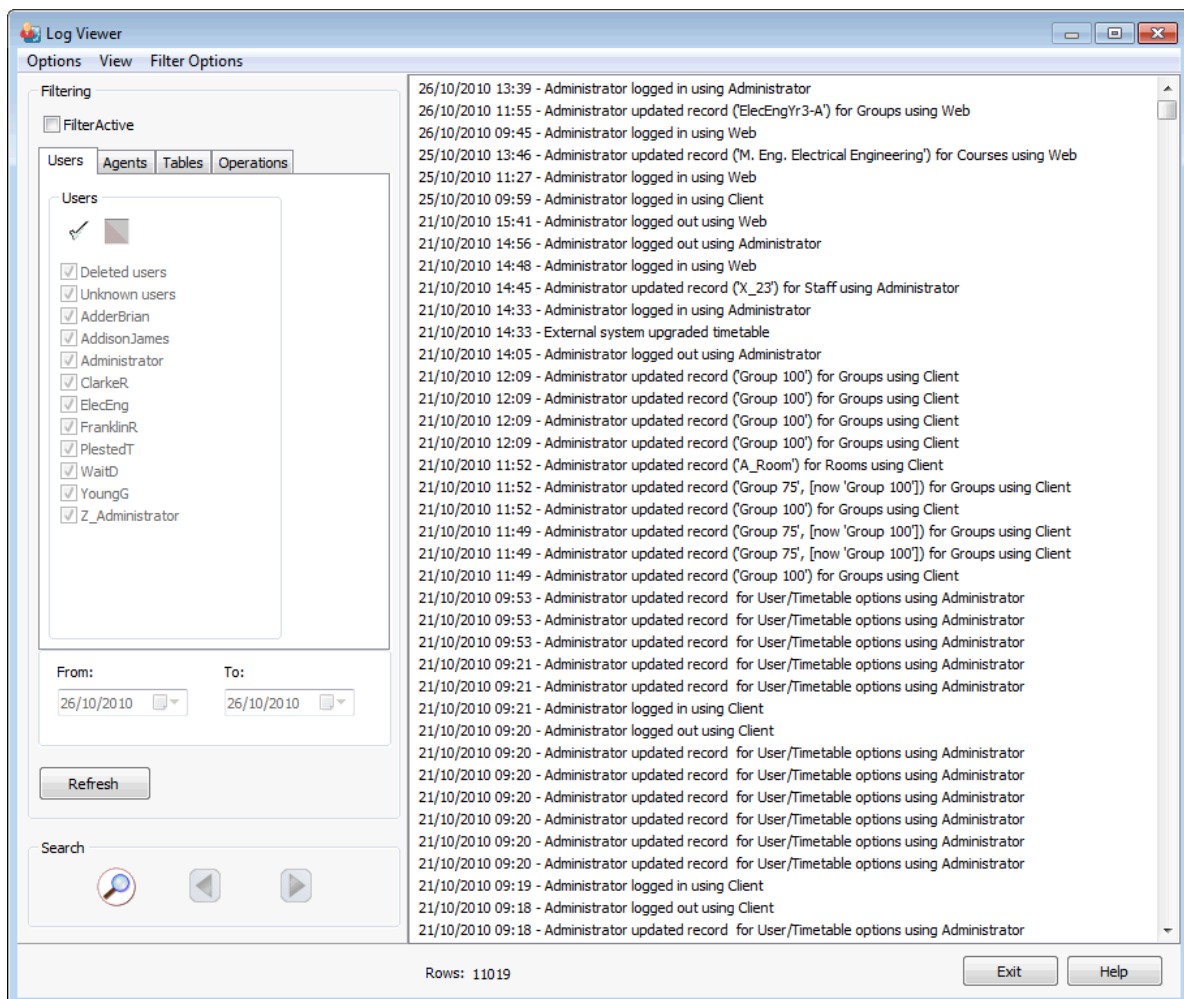


Office Wizard Timetable Output configuration window

3. Log Viewer

3.1 Natural Language

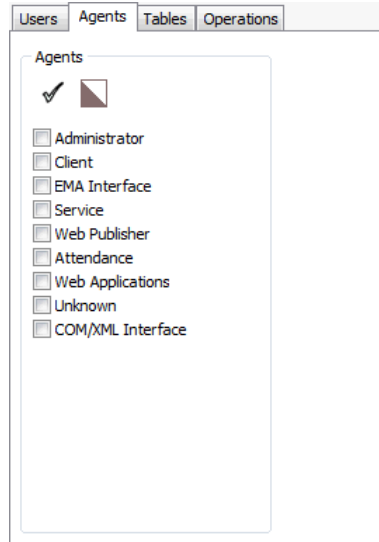
Log Viewer was first introduced with a grid format for displaying the log information. Requests have been made for Log Viewer to provide a simpler way of examining the log information. Log Viewer has been improved to allow users to choose between the grid format or a new Natural Language format. Natural Language format is the display of the log information in a sentence type structure (see example below).



The Log Viewer Window using the Natural Language View (Default)

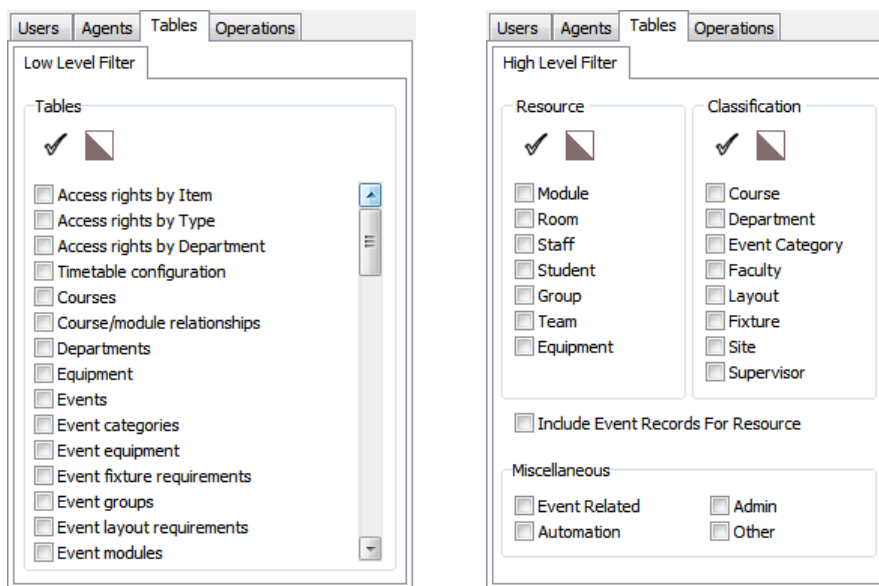
3.2 Improved Filtering

A new feature providing the ability to filter information via an agent, is now available in CELCAT *Timetabler 7*. An agent is a CELCAT application or an unknown third party application.



Log Viewer Agents List

The option to filter information via tables has been divided into a 'High Level Filter' and a 'Low Level Filter' allowing a user to select information from either a single table using the 'Low Level Filter' or from multiple tables using the 'High Level Filter'.



Low Level and High Level Table Filters

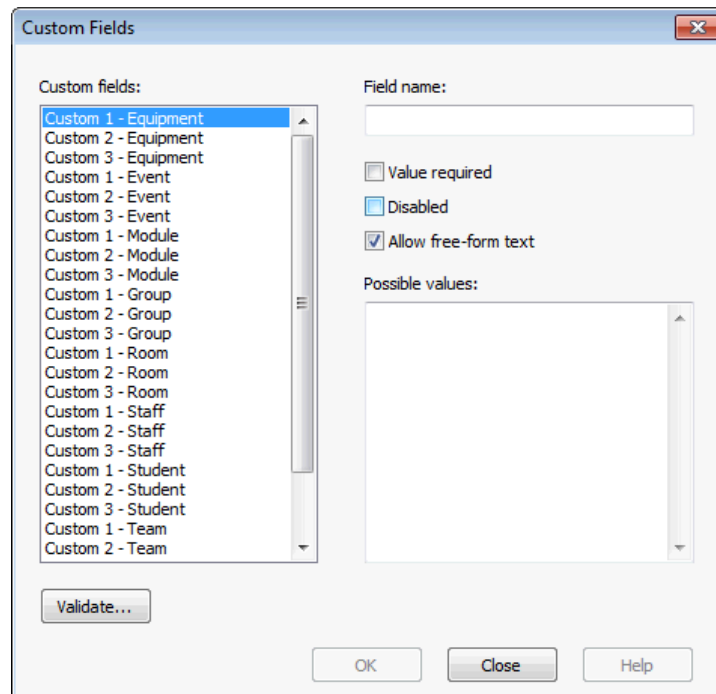
4. Custom Fields (formerly Tags)

In CELCAT *Timetabler* 6.4, each resource, classification and event contained either two and three "tag" fields. In CELCAT *Timetabler* 7, tag fields have been re-named "custom" fields. Each record now has three custom fields.

Each of the custom fields have the following configurable options:

- Field Name

- Value Required
- Disabled
- Allow free-form text
- Possible Values



Custom Field Configuration Window

Each of the custom fields can have a user-specified display name, specified by entering a field name for the custom field. If a custom field is not required its can be disabled. If the option 'Allow free-form text' is unchecked then the custom field will become a drop down list displaying values from the possible values list. These values are user-defined.

5. Offline Attendance

CELCAT *Timetabler* Offline Attendance is a new application for CELCAT *Timetabler* 7 that allows registers to be marked and collated offline prior to being uploaded to the main attendance database. See the CELCAT *Timetabler* Offline Attendance user guide for more information.

6. SQL Unavailability & Timeout Protection

A change to the CELCAT *Timetabler* Server has been implemented to protect the CELCAT *Timetabler* Server when requests for data are made to a SQL Server that is currently down or offline. CELCAT *Timetabler* Server now actively checks the status of all registered SQL Servers. So that concurrent requests made to the CELCAT *Timetabler* Server are not blocked.

7. SMS Support Goes Modular

Previous releases of CELCAT *Timetabler* supported a number of SMS providers. However when support for a new SMS provider was developed end users would need to upgrade to the next release of the software to obtain support for the additional providers.

With the release of CELCAT *Timetabler 7* support for SMS providers has changed to allow new SMS providers to be incorporated into an existing installation of CELCAT *Timetabler*. This change now means that end users do not have to wait until a new release of the software in order to activate a new SMS provider.

8. Notification Service

8.1 Additional Poor Attendance Recipient Types

In CELCAT *Timetabler 6.4*, the Notification Service could be configured to send SMS and email notifications to supervisors when a student receives a notifiable registration mark (typically an unauthorised absence mark).

In CELCAT *Timetabler 7*, the scope of recipients of a notifiable registration mark has been expanded to include students and tutors in addition to supervisors.

8.2 Poor Attendance Trigger Modes

Prior to CELCAT *Timetabler 7*, the requirement for additional trigger modes in poor attendance was raised. With this in mind 4 trigger modes have been created within *Timetabler 7* to replace the single trigger mode used in CELCAT *Timetabler 6.4*. These are described below:

Standard Mode

Notification is sent after a student receives at least x notifiable marks where the value of x defaults to 1. This basic trigger mode can be used to delay notifications until a student has received a specified number of notifiable marks. Note that because the Notification Service runs periodically, the number of notifiable marks may exceed x before the notification is sent in which case the notification message includes details of all notifiable marks to date.

Consecutive mode

Notification is sent after a student receives x consecutive notifiable marks where the value of x defaults to 2. The term 'consecutive' here refers to marks for chronologically adjacent registers. For example, suppose a student is scheduled 3 activities this Monday - at 9:00am, 1:00pm and 4:00pm and only attends the middle one, receiving notifiable marks for the other two. If the trigger mode's x value is set to 2 then notification will not be triggered (assuming none of the other trigger modes fires a notification). However, if the student attends only the first activity and receives a notifiable mark for the last 2 then the consecutive trigger fires and the notification is sent.

Note that this mode can operate over any time period as consecutive register marks might be days apart, e.g. if a student receives a notifiable mark on Friday afternoon and then another one at his next activity on the following Tuesday morning the consecutive trigger will fire (assuming $x = 2$).

Activity mode

Notification is sent after a student receives x consecutive notifiable marks for activities within the same event. For example, if an event runs in all odd weeks of the timetable, and $x = 3$ a notification would be sent if the student received notifiable marks in weeks 1, 3 and 5 of the event.

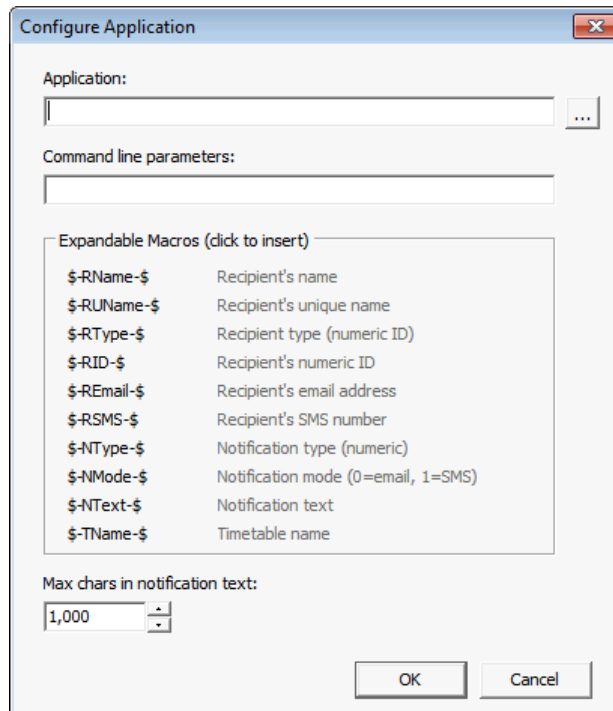
Note that because the Notification Service runs periodically, the number of consecutive notifiable marks within an event may exceed x before notification is sent in which case the notification message includes details of all consecutive notifiable marks.

Periodic mode

Notification is sent after a student receives x notifiable marks within y days.

8.3 Notification via a Third Party Application

CELCAT *Timetabler* Notification Service allows a third -party application to be executed each time a notification message is dispatched. The additional application is executed for every enabled notification type and notification method. All 'native' notifications (CELCAT notifications) are processed first then the third party application notifications are processed. Command line parameters can be specified by selecting a number of tokens available within the configuration window (see below). Ten distinct tokens can be passed to the application.



The screenshot shows a 'Configure Application' dialog box with the following elements:

- Application:** A text input field with a browse button (...).
- Command line parameters:** A text input field.
- Expandable Macros (click to insert):** A list of macros with their descriptions:

\$-RName-\$	Recipient's name
\$-RUName-\$	Recipient's unique name
\$-RType-\$	Recipient type (numeric ID)
\$-RID-\$	Recipient's numeric ID
\$-REmail-\$	Recipient's email address
\$-RSMS-\$	Recipient's SMS number
\$-NTtype-\$	Notification type (numeric)
\$-NMode-\$	Notification mode (0=email, 1=SMS)
\$-NText-\$	Notification text
\$-TName-\$	Timetable name
- Max chars in notification text:** A spin box set to 1,000.
- Buttons:** OK and Cancel.

Third Party Application Configuration Window

9. CELCAT Barcodes in Register Print

In CELCAT *Timetabler* Attendance, registers can be printed for manual marking and these registers can be configured to contain barcodes so that the register can be marked using a barcode reader. Typically clerical staff input marks into CELCAT *Timetabler* Attendance by reading the barcode for the register and all readable barcodes. All barcodes scanned by clerical staff will be marked with a present mark, barcodes not scanned will be marked as absent. (Registers that already have marks will be overwritten by the clerical scanning, and marks resulting from the clerical input can be manually overwritten.)

9.1 Barcode Requirements

- When a register is printed with the option to include barcodes, All barcodes must be EAN13 compatible.




Sample EAN13 barcodes

- Student records must contain a card number.


A student record containing a card number

9.2 Sample Barcode Register Print

Sample DB
Attendance Register



Friday, 19 March 2010, 10:23 - 11:35 (Week 28) Symposium
 ICAS99; 5 students
 Walsh, Robert



Key	Notes	Signed
<input type="checkbox"/>	Present	
<input type="checkbox"/>	Absent	
<input type="checkbox"/>	Absent (authorised)	
<input type="checkbox"/>	Late	
<input type="checkbox"/>	Late (authorised)	
<input type="checkbox"/>	Withdrawn	



10. Web Proxy Support

In CELCAT *Timetabler 7*, a new application CELCAT *Timetabler* Proxy Settings has been created. It's used to provide internet access to all CELCAT client apps where a proxy is in use.

CELCAT Timetabler Proxy Settings

Specify any http proxy server details that are required for CELCAT Timetabler products to access the internet. Internet access is used principally for SMS gateway support (text messaging) in Client, Administrator and Notification Service

NB - leave name and password blank if no authentication is needed

Server:
[]

Port:
[]

User name:
[]

Password:
[]

Use IE Settings

OK Cancel

Proxy Setting Window

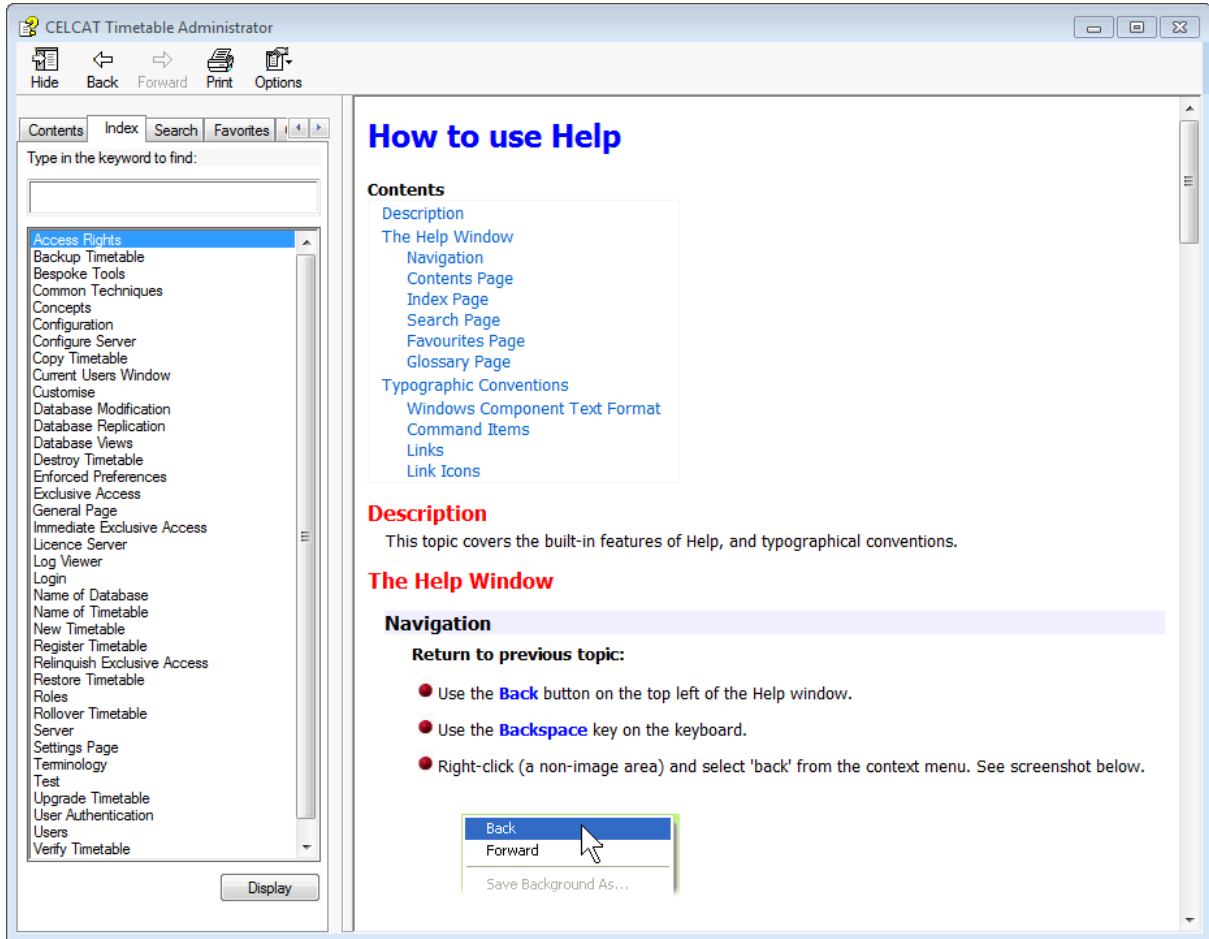
The settings for the proxy server can be specified in this application or alternatively the settings specified within "Internet Explorer" can be used.

11. Group Email

In CELCAT *Timetabler 7*, a new group email field has been created. This field can be used in a number of areas within CELCAT *Timetabler 7*. For example, when used within the Mailing Wizard timetables can be emailed to Staff, Students and now also to Groups (with a group email address).

12. Help Files

In CELCAT *Timetabler 7*, the help files have been improved.



13. Student Attendance Tracking changes its Name

In CELCAT *Timetabler 7*, the Student Attendance Tracking Application has been re-named 'CELCAT *Timetabler* Attendance'.

14. Changes to EMA Interface

CELCAT *Timetabler 7* provides an accredited link with the EMA provider Capita. Additionally modifications have been made to the EMA interface to improve the usability and performance of the software. Listed below are some of the changes:

- Each authorisation file entry now has its own transmission status.
- Successfully processed file entries cannot be removed.
- The Transmission file sequence number is automatically incremented when re-transmitting a transmission file to avoid sequence related errors.
- Online transmissions have been disabled.
- A log has been introduced to store all transmissions and responses that are received from Capita.
- A limit of 100 entries per file has been enforced.
- On each weekly authorisation list a user can view all registers where the student has received an absent mark or they have not received a mark. This is displayed using different colours.
- Two new fields have been incorporated into the weekly and bonus authorisation list. These fields are the department and the site. The department is the department that the student is a member of and the site is the site of the student's room if they are assigned a room.

15. Field lengths Increased

In previous releases of CELCAT *Timetabler*, The value length of string fields was limited to 64 characters. In CELCAT *Timetabler 7*, this limit has been increased for most fields to a maximum of 128 characters.