

Effective Student Attendance Monitoring



CELSCAT Attendance Client

Simple-to-use, easy-to-install Windows client application; the one-stop-shop application

CELSCAT Attendance Web

Functionality online; use the web client to mark registers

CELSCAT Attendance Palm/Pocket PC

The PDA version; for when you're on the move

CELSCAT Attendance Card

Use MIFARE student ID card readers, or supported barcode or magnetic stripe readers to record attendance

Paper registers

Cater for the traditionalist; create paper registers that cross-reference the electronic versions

Comprehensive attendance data

CELSCAT Attendance allows users to record high levels of attendance data with minimal effort. CELSCAT Attendance permits users to log the time in and out of teaching activities. Certain biographical data such as student pictures may be stored in the system. This may be useful for identifying attendees when a register is being taken. When used in conjunction with CELSCAT Notification Service configurable emails or SMS text messages may be sent to alert supervisors where problems exist.

Simple Reporting

CELSCAT Attendance lets you produce a wide variety of standard and custom reports detailing any area of concern relating to student attendance; for example, identifying students who have a poor attendance record, or courses that have above or below average rates of attendance. Using CELSCAT Attendance you can identify which rooms aren't being utilised effectively (including ghost bookings). The CT_Student_Mark database table provides a definitive record of marks and allows you to produce customised reports using any third party applications such as Microsoft SQL Server 2005 Reporting Services (SSRS).

Integration

CELSCAT Attendance is already fully integrated into CELSCAT *Timetabler*. This means that as teaching events are being created or modified in the timetable the corresponding registers are generated or changed in Attendance. Using a custom CELSCAT Software Integration Plugin, Attendance also integrates to your

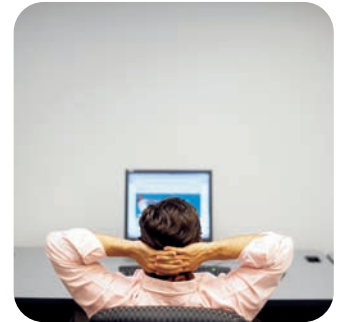
student MIS. In this way as students are enrolled on modules, enrolment information is synchronised with CELSCAT Attendance thereby populating all of the registers with the relevant students.

Finally

CELSCAT Attendance is an intuitive and easy-to-use tool. The applications are licensed on an annual basis. The licence provides universal use of the software at the registered site and offers unlimited technical support and maintenance updates. For more information, or to discuss the fee for implementing CELSCAT Attendance at your institution contact your account manager or email info@celscat.com

Technical Specification

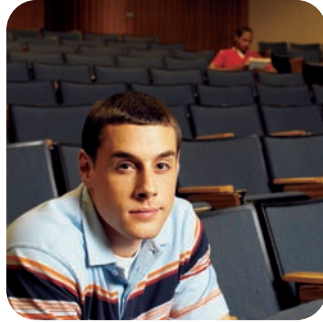
- Operating System: Windows 2000, Windows Server 2003, Windows Server 2008, Windows XP or Windows Vista (including 32 bit and 64 bit)
- Processor: 800MHz or higher processor clock speed, Intel Pentium/Celeron family, AMD K6/Athlon/Duron family, or compatible processor
- Server Software: Microsoft® SQL Server 2000 or greater, or Microsoft SQL Server Express 2005 (supplied)
- Memory: 512Mb
- Display: Super VGA (800x600) or higher resolution video adapter and monitor
- Web Browser: Microsoft® Internet Explorer 6 or greater, or Firefox 1.0 or greater
- Other: Typically 30Mb hard disk space for each component installed, Keyboard and Mouse or compatible pointing device





What is CELCAT Attendance?

CELCAT Attendance is an easy-to-use system that allows users to create and mark student registers electronically.



Effective student attendance monitoring provides a basic component in tackling student retention and attainment issues, as well as providing a more accurate alternative to space audit surveys.

Attendance monitoring and student retention

Commentators have identified that failing attendance offers a key indicator of students most likely to drop out of their studies. Attendance monitoring as a basis for pastoral and motivational procedures has been demonstrated as an effective method of improving student retention, thereby securing linked funding. CELCAT Attendance is the attendance monitoring tool that allows you to identify students at risk of withdrawal.

Attendance monitoring and student attainment

Rightly or wrongly, students today have a more consumerist approach to education than formerly. They expect institutions to carry more of the responsibility in ensuring they get the qualification they believe they have paid for. Yet, research shows that by good attendance they will improve their eventual results. Yes, the one area that will impact most on their eventual attainment is under their own control! Students with poor attendance will statistically perform less well academically than those with a good

attendance record. Students need to live up to their obligation to attend lectures. If they have a poor attendance record then the institution can point to such behaviour as a defence against unfair criticism. CELCAT Attendance will aid you to improve student academic achievement while protecting your institution's reputation for academic excellence.

Attendance monitoring and space audit surveys

One of the best ways to gather accurate space utilisation data is via a headcount. Institutions may spend large sums of money each year conducting these counts in specified rooms at times of peak use. A student attendance register provides one of the simplest ways of gathering this data. Once the register data is recorded, utilisation data becomes accessible and may be reported on. When used in conjunction with CELCAT *Timetabler* software, institutions are able to compare planned and actual usage of teaching space. CELCAT Attendance will provide more accurate audit data and at the same time feed through into better timetable planning decisions.

Flexible marking methods

One of the key requirements for any register system to be effective has to be the ease with which attendance marks are collected. Teaching staff do not want to be burdened with complicated data entry methods. To this end CELCAT Attendance has a number of easy-to-use flexible marking options:

Student	Last change	By user
Reid, Rachel	13/05/09 13:02	Administrator A
Reid, Rachel	13/05/09 13:02	Administrator A
Combell, Tracey	13/05/09 13:02	Administrator B
Cooney, Jerry	13/05/09 13:02	Administrator C
Craig, John	13/05/09 13:02	Administrator C
Starks, Elizabeth	13/05/09 13:02	Administrator C
Fair, Allison	13/05/09 13:02	Administrator C
Heath, Tony	13/05/09 13:02	Administrator C
Husband, Paul	13/05/09 13:02	Administrator C
James, Peter	13/05/09 13:04	Administrator D
Knox, Sandra	13/05/09 13:02	Administrator A
Martin, Timothy	13/05/09 13:02	Administrator D
Matthews, Anthony	13/05/09 13:02	Administrator C
O'Connell, Michael	13/05/09 13:02	Administrator A
O'Leary, Charlotte	13/05/09 13:02	Administrator B
Roberts, Diane	13/05/09 13:02	Administrator B
Sander, Lisa	13/05/09 13:02	Administrator C
Sargeant, Martin	13/05/09 13:02	Administrator C
Scaine, Sheila	13/05/09 13:02	Administrator C
Summer, Brendon	13/05/09 13:02	Administrator C

www.celcat.com



Address 21-23 Mercia Village
Torwood Close
Westwood Business Park
Coventry
CV4 8HX
United Kingdom

Telephone +44 (0)24 7646 9930

Fax +44 (0)24 7642 0994

Email info@celcat.com

Web www.celcat.com